



# Neighborhood Public School Data

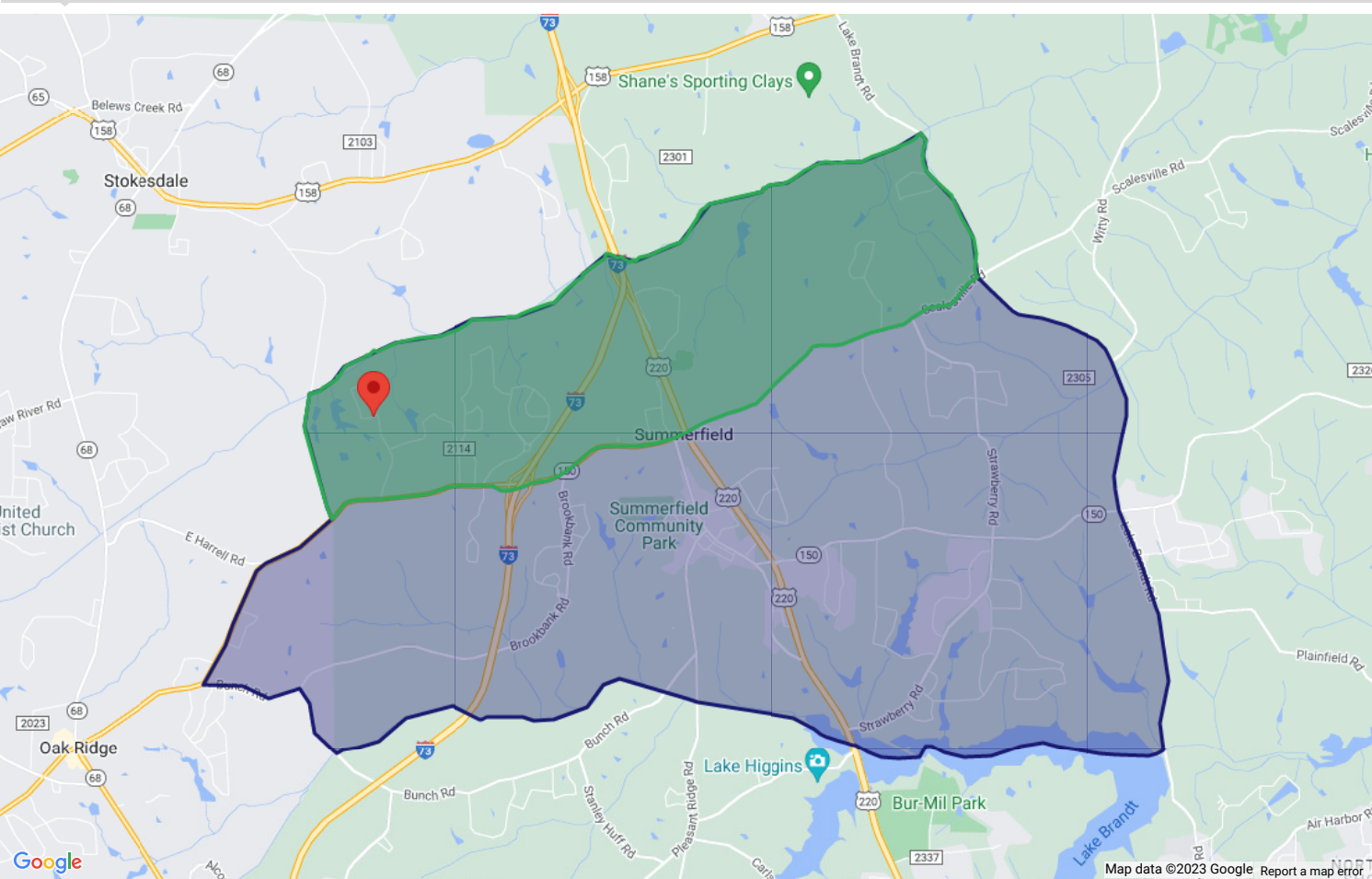
123 Mockingbird Ln, Summerfield, NC 27358

65 Vital Statistics | 2 Condition Alerts

October 09, 2025



NEIGHBORHOOD MAP



Neighborhood Boundary      Micro-neighborhood Boundary

ZONED SCHOOL RATING INFORMATION

\* 10 is the highest

School Quality

School Quality Rating, rates the quality of the zoned K-12 public schools that serve this address.

85

(100 is best)

Better than 85% of all U.S. schools.

Elementary Schools

9

Middle Schools

10

High Schools

9

SCHOOLS THAT SERVE THIS ADDRESS

Quality rating scores are provided below with 10 being the highest possible score. \* 10 is the highest

School Details	Grades	Compared to NC	Compared to Nation
<a href="#">Northwest Guilford High School</a> 5240 Northwest School Road Greensboro, NC 27409	09-12	8	9
<a href="#">Northwest Guilford Middle School</a> 5300 Northwest School Road Greensboro, NC 27409	06-08	10	10
<a href="#">Stokesdale Elementary School</a> 8025 Us Highway 158 Stokesdale, NC 27357	PK-05	9	9

THIS ADDRESS IS SERVED BY 1 DISTRICT:

Guilford County Schools		
69,173	127	15
students enrolled in this district	schools in district	students per classroom

District Quality Compared to NC

4

(10 is best)

Better than 38.8% of all NC school districts.

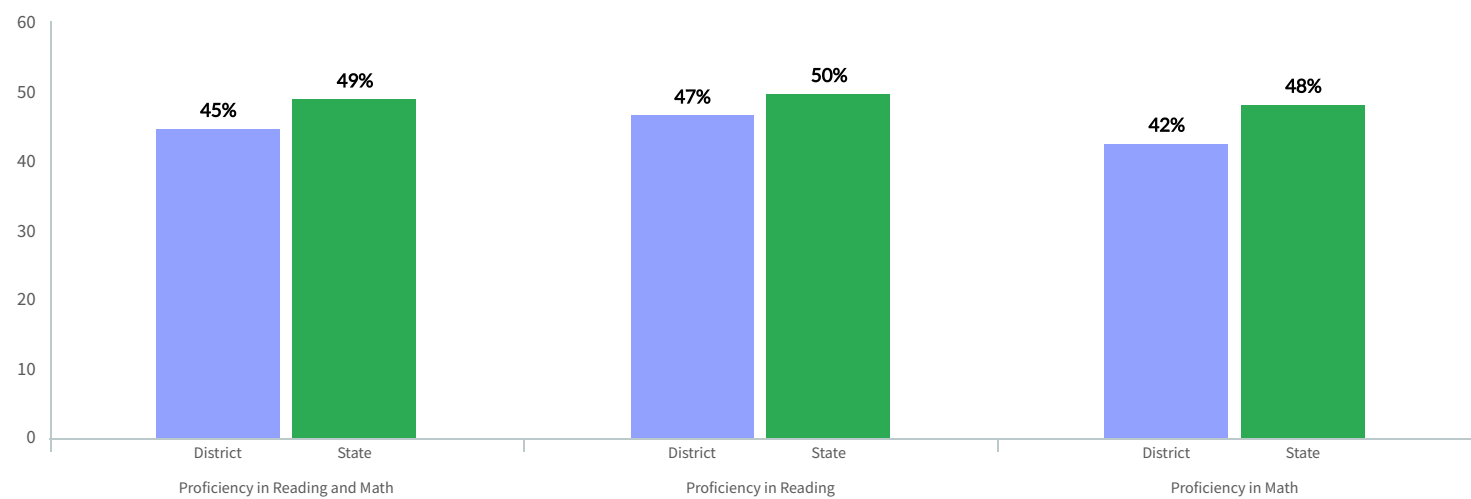
District Quality Compared to U.S.

4

(10 is best)

Better than 37.9% of all US school districts.

PUBLIC SCHOOL TEST SCORES




SCHOOL DISTRICT ENROLLMENT BY GROUP

ETHNIC/RACIAL GROUPS	THIS DISTRICT	THIS STATE
White (non-hispanic)	29.4%	47.4%
Black	44.2%	26.3%
Hispanic	18.7%	20.9%
Asian Or Pacific Islander	7.2%	4.0%
American Indian Or Native Of Alaska	0.5%	1.4%

ECONOMIC GROUPS	THIS DISTRICT	THIS STATE
Economically disadvantaged	61.8%	48.0%
Free lunch eligible	60.3%	46.3%
Reduced lunch eligible	1.5%	1.7%

EDUCATIONAL EXPENDITURES

FOR THIS DISTRICT	PER STUDENT	TOTAL	% OF TOTAL
Instructional Expenditures	\$6,336	\$460,513,152	58.5%
Support Expenditures			
Student	\$669	\$48,624,258	6.2%
Staff	\$382	\$27,764,524	3.5%
General Administration	\$95	\$6,904,790	0.9%
School Administration	\$646	\$46,952,572	6.0%
Operation	\$767	\$55,747,094	7.1%
Transportation	\$505	\$36,704,410	4.7%
 Among the <b>highest</b> per student in this state.			
Other	\$340	\$24,711,880	3.1%
Total Support	\$3,404	\$247,409,528	31.4%
Non-instructional Expenditures	\$1,091	\$79,296,062	10.1%
Total Expenditures	\$10,831	\$787,218,742	100.0%